



13 DAYS MPUMALANGA AND KWAZULU NATAL



THE START OF A LEGACY

Falcon Safaris is run by people who know the African continent intimately, who have lived there, and who know the people and Places. It is run by people who were born and raised in Africa and who continue to return year after year – not only to refresh their knowledge but predominantly because of the love and passion that they have for its areas.

Falcon Safaris is owned and managed by
Hamilton and Chenai Mandi.

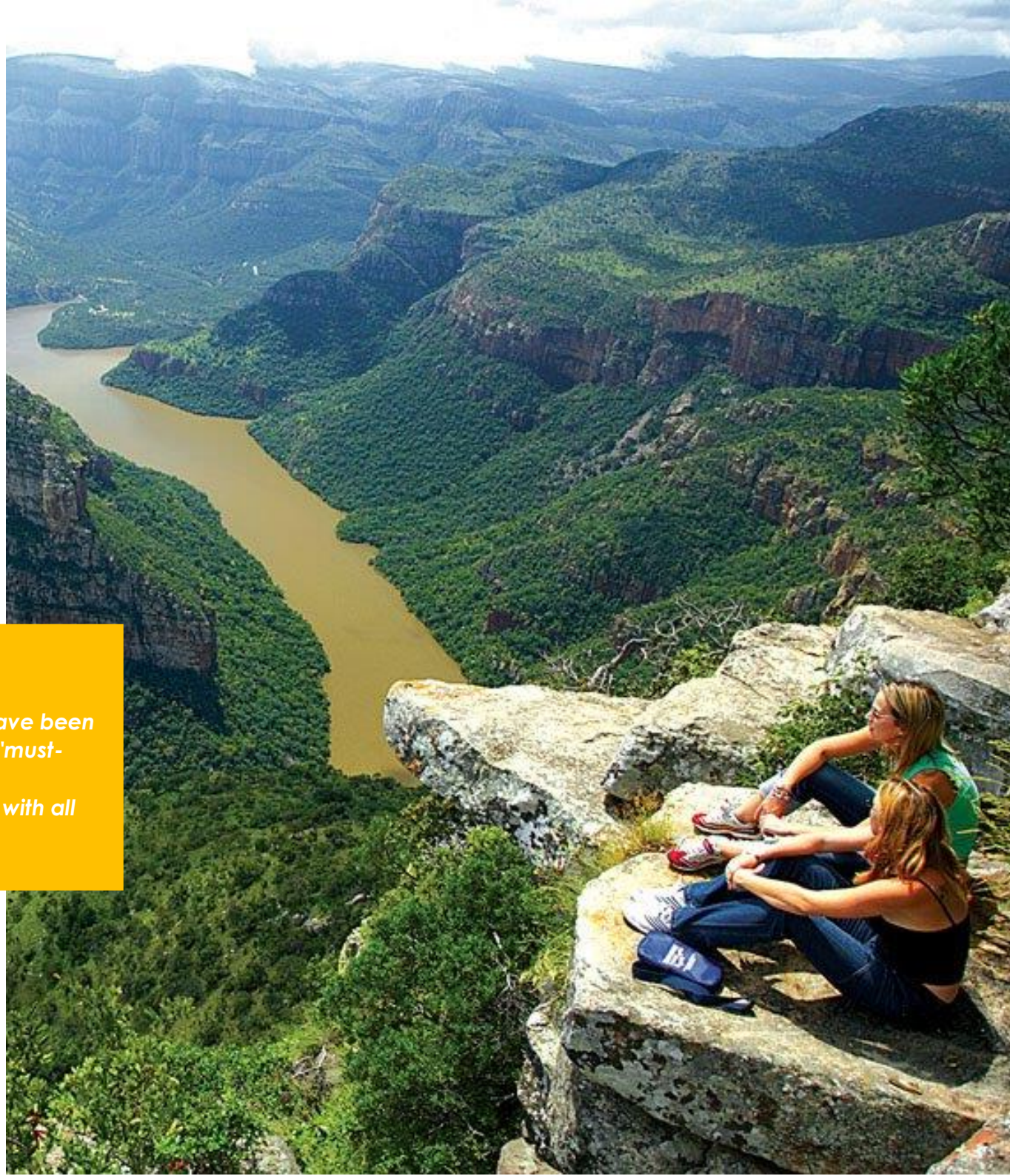


13 Days Mpumalanga And KwaZulu Natal

South Africa, officially known as the Republic of South Africa, is a great place to visit for a first-time safari. You'll find classic African scenery: golden savannah, great gaping gorges, and hauntingly beautiful deserts, as well as an awe-inspiring cast of African creatures and, as a bonus all the creature comforts.

HIGHLIGHTS

- ✓ *KwaZulu Natal Package Tours of South Africa which have been compiled by experienced Tour Operators, to include "must-see" destinations in Mpumalanga and KwaZulu Natal.*
- ✓ *Tour Packages allow the traveler a stress-free holiday with all aspects of the trip taken care of by professionals.*





ROUTE & ITINERARY

DAY 1: JOHANNESBURG/ DULLSTROOM

Upon arrival at OR Tambo International airport (formerly the Johannesburg International airport), you will be met by our representative, and with the hired car arrangements – based on flight arrival before 11.00 in the morning.

Drive to Dullstroom in Mpumalanga, one of the most scenic areas of South Africa. It is just over 2 hours Johannesburg, en route to the Kruger National Park. Dullstroom conjures picture of a log fire, a misty morning, a trout stream. This quaint village, known for its high altitude fresh air, has become the place to be. Something truly unique and special...Walkerson's Country House with its stone and thatch buildings and 1500-acre Highland Estate offers an almost royal experience.

All bedrooms are very private with lake views and afford guests every comfort. Fireside armchairs, a well stocked private mini bar and television are standard to every room. Excellent cuisine and handpicked wines are a house specialty and attentive staff compliment the fine dining. Indulge in gentle country pursuits, Walkerson's Country House offers beautiful forest and river walks, as well as walking trails into the nature reserve where indigenous game abides in a mountain wilderness renowned for its birdlife and prolific flowers. All equipment is provided for the fly fisherman, with the chance of fly-fishing for rainbow trout in several kilometres of Private River or one of many lakes.

One night accommodation at Walkerson's Farm House on a Dinner, Bed and Breakfast Basis

DAY 2-3: DULLSTROOM/ BLUE MOUNTAIN LODGE

The Mpumalanga / Lowveld Area around the Kruger Park is beautiful, and definitely worth exploring especially the highly promoted 'Panorama Route'. We suggest you drive via the Blyde River Canyon en route to Blue Mountain Lodge. There are many scenic sights and attractions in this area to be explored in the next two days, including God's Window, Bourke's Luck Potholes, the Blyde River Canyon, Pilgrims Rest and The Kruger National Park. Blue Mountain Lodge is situated in close proximity to these attractions – affording you the opportunity to explore the surrounding area without having to travel great distances. You have two free days to join a guided tour (we can pre-book this or you can ask the hotel for assistance) or just time at leisure. Blue Mountain Lodge is situated in Kiepersol – the heart of the Panorama route one of the most scenic areas of South Africa. Great care has been taken to create unique inspiring accommodation. All the suites at Blue Mountain Lodge are unique, each suite boost its own fireplace and en-suite bathroom. Set on 200 hectares of indigenous bush, forestry and farmland, the ochre-washed Lodge with its cool deep verandas and whirring white fans, is an "Out of Africa" story come true. The main complex comprises a reception, elegant restaurant and bar with a competition size billiard table. With prior notice, the Blue Mountain Lodge can arrange beauty treatments on the premises. These include facials, body massages, manicures etc. Golf – for the golfing enthusiast, there are 5 golf courses – designed, amongst others, by Gary Player – within 20 minutes drive from Blue Mountain Lodge.

There are beautiful walking routes on the two hundred hectares of indigenous bush, forestry and farmland but further walking trails are found within short driving distances along the Panorama Route.

Two night's accommodation at Blue Mountain Lodge on a Dinner, Bed and Breakfast basis





DAY 4-5: BLUE MOUNTAIN LODGE/ SABI SAND GAME RESERVE

After breakfast you will depart on the scenic drive to Leopard Hills in the Sabi Sand Wildtuin (Private Game Reserve). You will be met on arrival and assisted with your check in at the lodge. Spend the days on game activities as offered – game drives in open safari vehicle, and guided walks. The lodge, built on a hill overlooking a natural waterhole and close to the perennial Sand River, lives up to its name. You may be lucky to catch sight of a leopard on the hunt, a breeding herd of elephant, or a few gracious kudu. Many species of antelope pass by within view of the lodge. On safari you may see lion, elephant, white rhino, buffalo, cheetah, wild dog, hyena and many more, viewing them from state-of-the-art Land Rovers, specifically designed for Leopard Hills, which have individual bucket seats with fold-down armrests, ensuring your optimum safety and comfort. Out walking you will discover some of the endless number of fascinating small creatures of Africa. These are just a few of the amazing encounters awaiting you – as each day can be different as one explores the endless fascination of Africa's wildlife.

Back in camp you will find the highest standards of service and fine cuisine and not least of all a warm, friendly and fun-filled atmosphere which is the special feature of Leopard Hills. Each of the 8 luxurious glass-fronted suites, complete with their own sundeck and rock plunge pool offer superb views of the African Bushveld beyond, while air-conditioning and overhead fans provide welcome respite against the harsh African heat. The breath-taking romantic bathrooms, which include double indoor and outdoor showers, have windows which open to a glorious view of the passing cavalcade below. Enjoy the privacy of your suite and salute the timelessness of Africa over a drink from your fully-stocked mini bar. Or drift into a deep and peaceful sleep whilst enjoying a full body massage.

Two night's accommodation at Leopard Hills on an all inclusive basis (all inclusive of all meals, snacks, game activities, park fees but excludes drinks and Gate Entrance Fees)

DAY 6-7: SABI SAND/ SERENITY FOREST LODGE

You will depart early this morning, after breakfast and your morning game drive to Serenity Mountain and Forest Lodge, in Malelane.

Serenity Luxury Forest Lodge is a very unique African experience. A combination of comfort, cuisine and tranquillity. A delight for birders and nature enthusiasts alike.

Here you can enjoy spectacular and unspoilt scenery. Explore the contrasting landscape – climb richly forested mountains, take a dip beneath crystal clear waterfalls, enjoy romantic picnics, discover disused gold mines, enjoy a 4x4 Sundowner trip overlooking Swaziland or have a relaxing massage on your private deck.

Luxury thatched chalets are situated on two sites, romantically tucked away amongst the riverine forest and connected by suspended walkways. Each chalets has a character all of its own and all en-suite and fully equipped with satellite TV and mini bar.

Organised trips can be arranged to the Kruger Park, Mozambique, Swaziland, God's Window and Pilgrim's Rest. For the golf enthusiast, nearby courses include the exclusive Leopard Creek and the Malelane Country Club.

Regrettably no children under the age of 16 years can be accommodated at the Lodge.

Two night's accommodation at Serenity Mountain and Forest Lodge on a Dinner, Bed and Breakfast basis.





DAY 8-10: SERENITY FOREST LODGE/ PHINDA PRIVATE GAME RESERVE

An early start this morning for your drive to Phinda Private Game Reserve, where you will stay at Forest Lodge. Phinda Forest Lodge lies within the 150 square kilometre Phinda Private Game Reserve, in the Maputaland region of KwaZulu-Natal, South Africa. Neighbouring the Greater St Lucia Wetland Park – a World Heritage Site – to the east and is only 30 kilometres due west of the white-fringed beaches of the Indian Ocean. Inventively designed in what is often called “Zulu-Zen”, each suite is a combination of glass, wood and minimalist design incorporating high-gloss wooden floors and crimson Zulu artefacts. Delicious Pan-African cuisine is served to you on the deck overlooking the grassy plains or in the Boma (outdoor dining area) illuminated by dozens of candles and lanterns.

Enjoy adventurous breakfasts and romantic dinners in spectacular African safari locations.

At first light set off in an open Land Rover – possibly for a picnic breakfast at a carefully selected site, or for a morning boat cruise on the Mzinene River. During the heat of the day, you may choose to relax around the secluded pool – or to walk, discovering the many rare creatures and fascinating array of birds and insects that inhabit the forest.

Those with a spirit of adventure may wish to explore the nearby coastline, snorkelling or diving amongst the southernmost coral reefs in the world. Late afternoon adventures add to the magical experience. As the shadows lengthen, a stop is made for sundowners. And, after sumptuous dinner in the Boma under the moonlight canopy of towering trees, you will fall asleep to the sounds of the living forest

Three night's accommodation at Phinda Forest Lodge on a fully inclusive basis

DAY 11-12: PHINDA PRIVATE GAME RESERVE/ BALLITO

After a leisurely breakfast and morning game drive, you depart for the Dolphin Coast, to spend your last two days of your Safari, relaxing on the beach.

This stylish luxury guest house is centrally located just outside Durban in Ballito. Only five minutes from the beach, The Vineyard offers the perfect North Coast stay in luxurious suites with ocean views.

You will be greeted with a warm welcome, the friendly establishment is inspired by the beauty and grandeur of the magnificent South African Vineyards and the country's viticultural history.

You are sure to replenish your soul with quiet naps under Lemon Trees and lazy book-reads in comfy sofas upon airy patios. With a treasure-trove array of superb South African wines to enjoy, the weary traveller is sure to find himself in estate of bliss!

All guests will be charmed by the thoughtful touches peppered throughout this home which invites you to kick off your shoes and unwind.

Two night's accommodation at The Vineyard on Ballito on a Bed and Breakfast Basis



DAY 13: DEPARTURE DAY

Today you drop-off the hired car at Durban International Airport, and connect with your onward flight.

INCLUDED

- ✓ Transportation (4x4 vehicle Toyota Land Cruiser)
- ✓ Meals & Drinks
- ✓ Flying Doctors insurance (AMREF)
- ✓ Your Choice of Activity on Design Your Day
- ✓ Internet Access
- ✓ Entrance Fees, Taxes, and All Government taxes incl VAT
- ✓ Guide with English speaking driver/guide

EXCLUDED

- ✗ International flights (from/to home)
- ✗ Tips
- ✗ Personal items (souvenirs, travel insurance, visa fees, etc.)
- ✗ Travel insurance and medical repatriation
- ✗ Items of a personal nature



OUR TRAVELLERS SAY



Google Rating

5.0 ★ ★ ★ ★ ★

[See all our reviews](#)



ROB - UK



WELL ORGANIZED, TOURS ALL ON TIME

All staff made tours interesting. They had good knowledge of the history in question.



LISA EALES - AU



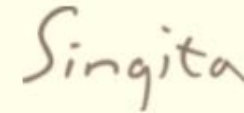
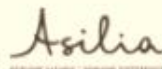
EXCELLENT FROM START TO FINISH

I would recommend your company to any travellers. All the activities we did were great and the guides were fantastic. Booking online was very easy. We will be back and will defiantly use you again.



AFRICA IS ABOUT WHO YOU KNOW

We have partnered with the BEST IN AFRICA
to ensure your DREAM TRIP is in safe hands.



OUR PARTNERS
AND ASSOCIATIONS





YOUR AFRICAN PARTNER IS WAITING
TO WELCOMING YOU



www.falconsafaris.com