



4 DAYS

BWINDI & QUEEN ELIZABETH

SAFARI



THE START OF A LEGACY

Falcon Safaris is run by people who know the African continent intimately, who have lived there, and who know the people and Places. It is run by people who were born and raised in Africa and who continue to return year after year – not only to refresh their knowledge but predominantly because of the love and passion that they have for its areas.

Falcon Safaris is owned and managed by *Hamilton and ChenaiMandi*.



4 DAYS BWINDI & QUEEN ELIZABETH SAFARI

Engage in a [4 Days Bwindi and Queen Elizabeth safari](#) national park safaris, get to do a game drive in Queen Elizabeth national park as well as a boat cruise in Kazinga channel seeing several wildlife and bird species, later proceed to Bwindi forest national park famous for the gorillas trekking, do gorilla trekking and later transfer back to Kampala.

HIGHLIGHTS

- ✓ *These 4 days Uganda safari combines gorilla tracking in Bwindi Impenetrable National Park with game viewing in the Queen Elizabeth National Park.*
- ✓ *This 4 Days Queen Elizabeth and Bwindi Safari is a great way to experience game viewing, Chimpanzee tracking, and Gorilla trekking in a short time and without spending a fortune.*
- ✓ *Enjoy a game drive in Queen Elizabeth National Park, Chimpanzee tracking at Kalinju forest, and Gorilla trekking in Bwindi.*





ROUTE & ITINERARY

DAY 1: KAMPALA - BWINDI NATIONAL PARK

This Morning, you will be picked from your hotel/residence in Kampala at around 7.00 am and proceed to the south western part of the country. Stop at The equator for land mark photo taking and continue to Mbarara. Break for lunch on the way then proceed to Bwindi National Park the home of Mountain Gorillas. It is estimated to half of the world's surviving population of mountain gorillas –300 live within these boundaries shared by Uganda, Rwanda and Congo. The drive is long but enjoyable. Proceed south to Buhoma viewing the terraced hills of Kigezi Highlands once known as Switzerland of Africa. Arrival will be in the evening. You will then settle in at your lodge for Dinner and overnight as you prepare for tomorrow's event! FB

DAY 2: GORILLA TRACKING BWINDI

Morning after breakfast with packed lunch, you will be escorted to the starting point for briefing by your guide. you will be allocated guides to track gorillas with, and then will be off to begin your adventure. A briefing from your local guides and then it's off! the time taken and the terrain vary (1- 8 hours) this depends on the movement of these gentle giants. the thrill of meeting face to face takes away the pain of some times long and arduous trek. Each encounter is different and has its own rewards, but you are likely to enjoy the close view of adults feeding, grooming and resting as the youngsters frolic and swing from vines in delightfully playful manner. After tracking will walk back to your lodge for overnight stay fb. You will need to carry long pants like light type, sturdy shoes to help you hiking steep and slippery slopes, long sleeved shirts and blouses to protect your bodies from thorns and itching plants. You may not rule out raining on you and at least a rain coat is needed to protect your bodies and any equipment carried along with like cameras. Also carry insect repellants and sun cream

DAY 3: BWINDI NATIONAL PARK ISHASHA - QUEEN ELIZABETH NATIONAL PARK

After early breakfast head for Ishasha, which is the southern sector of Queen Elizabeth National Park, carry out a game drive where you may sight tree-climbing lions and viewing other wildlife like elephant buffalo, hyena etc. Ishasha sector is dominated by acacia woodland and scrubland and features the meandering Ishasha River, banked by a riparian forest. After check in at your lodge for dinner and overnight.

DAY 4: QUEEN ELIZABETH PARK - KAMPALA

This day will be driven to Kyambura Gorge for Chimpanzee tracking while doing a nature walk. The Kyambura Gorge is famous for a primate walk where you will see chimps and other primates e.g. Columbus & velvet monkeys and baboons. After the chimp walk drive back to Kampala with your packed lunch. Arrival will be in the evening END OF SAFARI

INCLUDED

- ✓ Meals and accommodation at full board for the agreed dates
- ✓ Gorilla permits 1 permit per person
- ✓ Game drive — Ishasha, park fees, 1 tracking chimpanzee permit per person
- ✓ safari driver /guide and 4x4 vehicle
- ✓ Park fees
- ✓ Applicable government taxes
- ✓ Drinking bottled water while driving on safari

EXCLUDED

- × Beverages and bar bills
- × phone calls
- × personal insurance and any other services of personal nature like souvenirs, tips, laundry etc



OUR TRAVELLERS SAY



Google Rating

5.0 ★★★★★

[See all our reviews](#)



Bev - US



Newton was the best tour guide and transfer driver ever

We had an awesome time on our trip to Victoria Falls and Chobe National Park.



Brian Robinson - UK



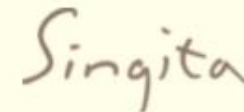
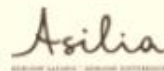
Visiting both sides of Vic Falls

The airport pick up and drop off were spot on. The tour of both sides of the Falls went so smoothly. Well done



AFRICA IS ABOUT WHO YOU KNOW

We have partnered with the **BEST IN AFRICA** to ensure your **DREAM TRIP** is in safe hands.



OUR PARTNERS AND
ASSOCIATIONS





**YOUR AFRICAN PARTNER IS WAITING
TO WELCOMING YOU**



www.falconsafaris.com