



**8 DAY CHOBE SAVUTE & MOREMI
BOTSWANA 4X4 SELF-DRIVE**

SAFARI TOUR

**Safe
travels**

by
WORLD
TRAVEL &
TOURISM
COUNCIL

THE START OF A LEGACY

Falcon Safaris is run by people who know the African continent intimately, who have lived there, and who know the people and Places. It is run by people who were born and raised in Africa and who continue to return year after year – not only to refresh their knowledge but predominantly because of the love and passion that they have for its areas.

Falcon Safaris is owned and managed by
Hamilton and Chenai Mandi.

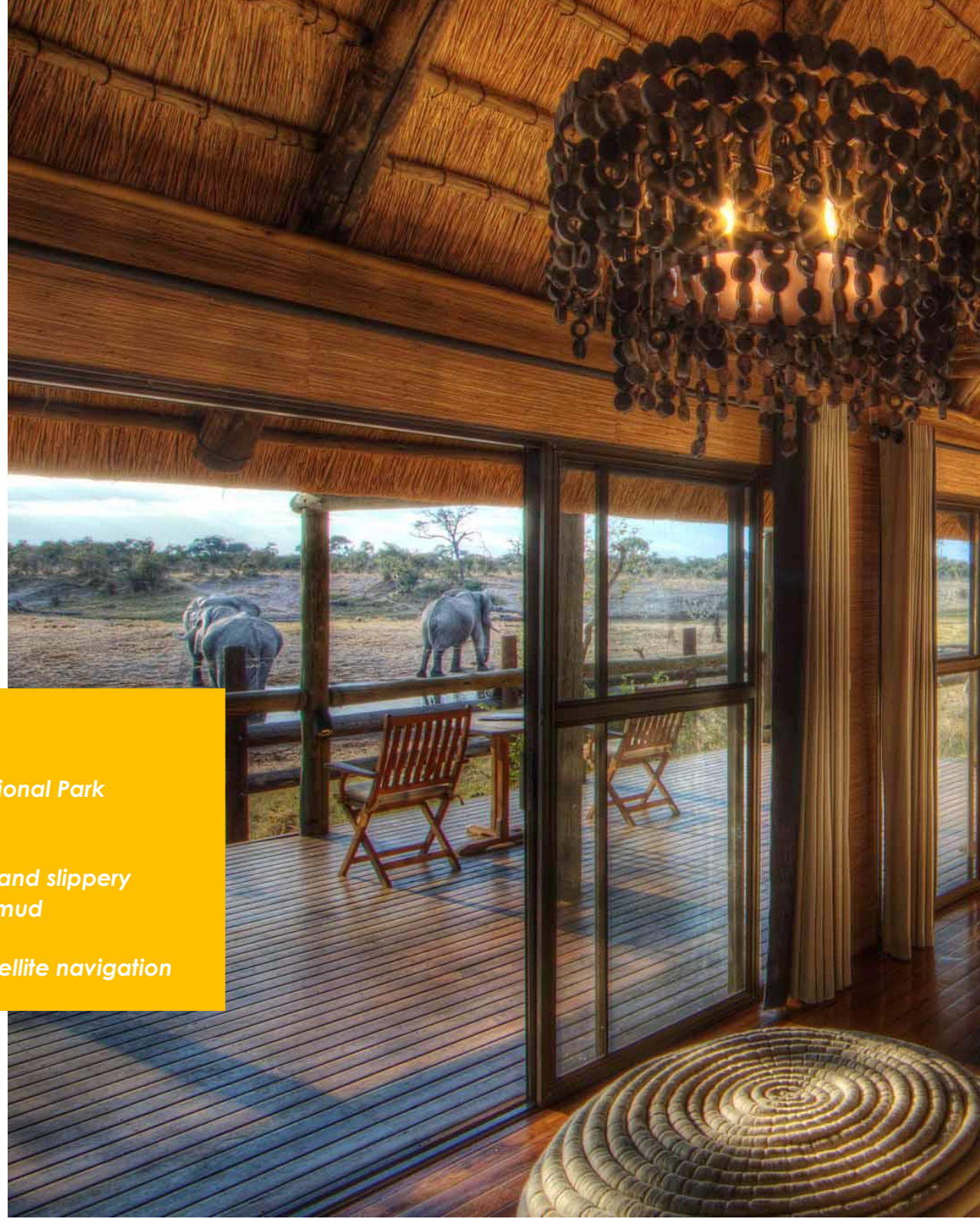


8 Day Chobe Savute & Moremi Botswana 4x4 Self-Drive Safari Tour

An adventurous safari trip through Botswana, starting in Kasane and ending in Maun. During this 4x4 self-drive tour you will visit the Chobe National Park, Moremi Game Reserve, and the Okavango Delta. Optionally at this Botswana trip is a longer stay in Kasane or Victoria Falls (Zimbabwe). For this Botswana safari, you can use a flight to Kasane, Victoria Falls, or Livingstone.

HIGHLIGHTS

- ✓ *Travel to Moremi Game Reserve, Savute, and Chobe National Park*
- ✓ *Can easily be extended by a few days in Victoria Falls*
- ✓ *Ideal if you have some experience with 4x4 driving*
- ✓ *During the rainy season, the roads can become flooded and slippery*
- ✓ *Road conditions vary and include tar, gravel, sand, and mud*
- ✓ *Combination of self-drive and guided game viewing*
- ✓ *4x4 vehicle with backup service, satellite phone, and satellite navigation*





ROUTE & ITINERARY

DAY 1: OVERNIGHT IN MAUN

Boat cruise on the Thamalakane River. Today you will pick up the keys to your ride before heading for a self-drive to Maun. Get a taste of this tourism hub as you drive through dusty roads to your comfortable Maun accommodation. You have the freedom to roam around at your own pace, and settle in to your accommodation for a peaceful night of sleep.

DAY 2 & 3: DRIVE NORTH TOWARDS MOREMI GAME RESERVE

Observing a nearby elephant from private game viewing deck. Take to the road in your Botswana car rental to experience one of the most beautiful park in all of Africa - Moremi Game Reserve. You will pass by floodplains and ancient riverine forests as you make your way to your tented accommodation in Moremi. There will be the opportunity for an optional mokoro cruise to view game from the water channels, providing a unique perspective for your Botswana safari tour. The next two days are spent exploring this fascinating region on drives to witness wildlife in abundance. (105 km / approx. 3 - 4 hours driving time)

DAY 4 & 5: EXPLORE THE SAVUTI MARSH

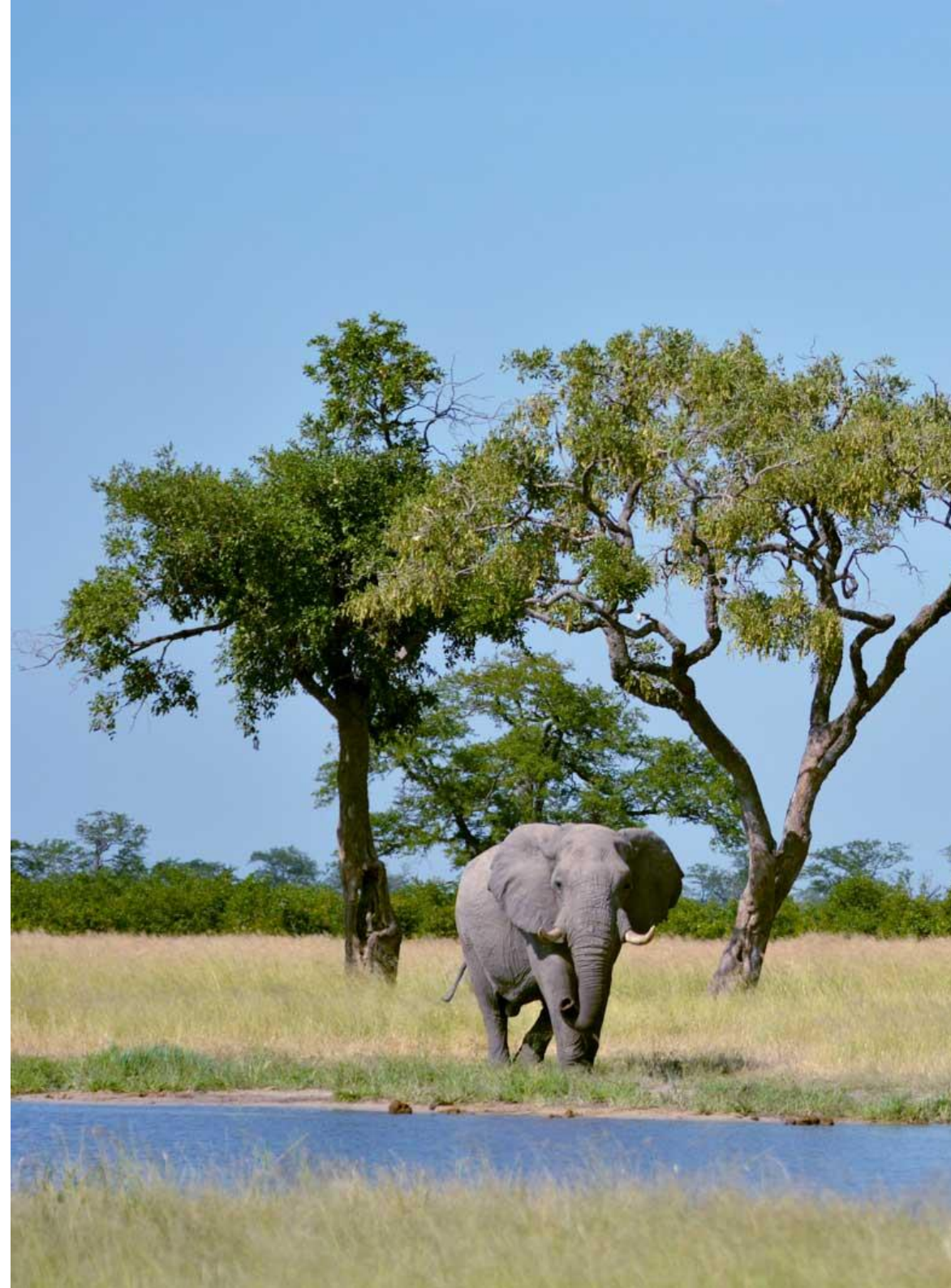
Lion cub sighting during an afternoon game drive. Today is an early start as you head towards Chobe National Park, thought by many to be the top game parks in Africa, which is renowned for its large elephant population. A must-see is the spectacular Savute Marsh, home to most of Chobe's incredible species. Watch as lion, cheetah, and hyena lurk through the swamplands and open savannah in search for their next meal. Whilst here you can explore the area via guided game drives in the late afternoon, and kiss the day goodbye with a cold drink in hand as you witness the African sunset. (100 km / approx. 3 - 4 hours driving time)

DAY 6 & 7: ABUNDANT GAME VIEWING IN CHOBE

Elephants by the River in the Chobe National Park. In the morning, you will leave for Chobe to your accommodation built on the banks of the Chobe River. Here you can witness the majestic Chobe bushbuck, warthog, mongoose, vervet monkey and an abundant hippo. Spend your days exploring the region on game drives or track smaller creatures on walking safaris. Alternatively, you can spend the afternoon cruising the confluence of the Chobe and Zambezi Rivers. End off the evening with a delicious meal on the river deck and reflect on your safari. (160 km / approx. 4 - 5 hours driving time)

DAY 8: KASANE AND ONWARDS

Stunning Chobe River views from the deck at Chobe Safari Lodge. You will have time for a morning optional activity before dropping off the vehicle at the airport and meet your onward travelling arrangements.



INCLUDED

- ✓ Botswana 4x4 car rental for 8 days' with back-up service, satellite phone and satellite navigation (premium insurance cover and unlimited mileage)
- ✓ 1 night classic accommodation by the river in Maun
- ✓ 2 nights' accommodation at a tented camp near the Moremi Game Reserve
- ✓ 2 nights' accommodation in the Savuti, Chobe National Park
- ✓ 2 nights' accommodation at a safari lodge on the banks of Chobe River
- ✓ Breakfast, lunch and dinner from day 2 onwards
- ✓ Local branded drinks including water, tea, coffee, soft drinks, house beers and wines from day 2 to day 6
- ✓ Sunset cruise on Thamalakane River on day 1
- ✓ Morning and afternoon game drive in open safari vehicle with experienced guide on day 4 and 5
- ✓ Guided game drive and boat cruise into Chobe National Park (Park fees included) on day 6 and 7
- ✓ Laundry service

EXCLUDED

- ✗ Park fees and optional activities
- ✗ Meals and drinks not specified
- ✗ Call out fee in case of an emergency and all other extras to be settled direct



OUR TRAVELLERS SAY



Google Rating

5.0 ★ ★ ★ ★ ★

[See all our reviews](#)



ABHIJIT GHOSE – SZ



**Excellellent personalised
service**

Excellent all arrangements were good and
staff very helpful



Dan – ZA

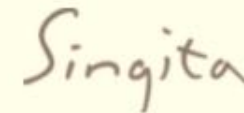
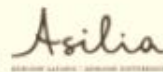
Great experience



myself and my 22yr old daughter used Falcon
Safaris for all our outings as well as airport
transfers. Canoeing, Devils Pool visit and
Elephant back ride. They were all fantastic
especially Vimbai and Edna. We had an
amazing time and nothing was too much
trouble to sort out for us.

“AFRICA IS ABOUT WHO YOU KNOW

**We have partnered with the BEST IN AFRICA
to ensure your DREAM TRIP is in safe hands.**



**OUR PARTNERS
AND
ASSOCIATIONS**





**YOUR AFRICAN PARTNER IS WAITING
TO WELCOMING YOU**



www.falconsafaris.com