



8 Days Wildlife On Your

DOORSTEP SAFARI

**Safe
travels**

by
WORLD
TRAVEL &
TOURISM
COUNCIL

THE START OF A LEGACY

Falcon Safaris is run by people who know the African continent intimately, who have lived there, and who know the people and Places. It is run by people who were born and raised in Africa and who continue to return year after year – not only to refresh their knowledge but predominantly because of the love and passion that they have for its areas.

Falcon Safaris is owned and managed by
Hamilton and Chenai Mandi.

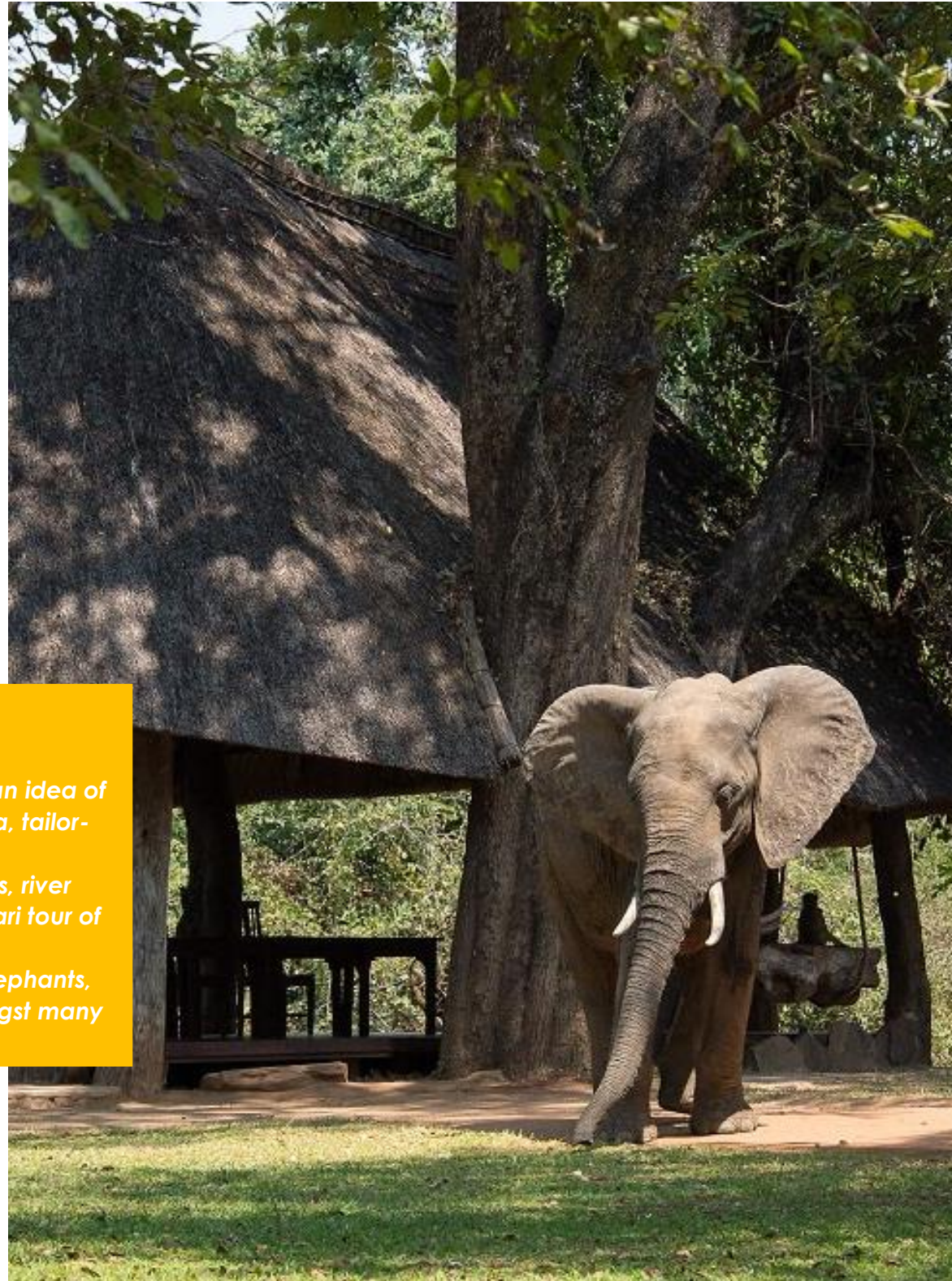


8 Days Wildlife On Your Doorstep Safari

This classic [8 Days Wildlife on your Doorstep Safari](#) tour of Zambia includes all the highlights of the South Luangwa Valley, from exclusive riverside accommodation to excellent game viewing excursions in the South Luangwa National Park. Explore the South Luangwa as you move from the lodge to lodge, each one welcoming you to an exclusive stay adorned by unique characteristics but joint by the exhilarating game viewing opportunities.

HIGHLIGHTS

- ✓ *This itinerary is priced per person and designed to give you an idea of what can be included on your bespoke luxury tour of Zambia, tailor-made to suit your tastes and preferences.*
- ✓ *Explore one of Zambia's best national parks with game drives, river activities, and incredible walking safaris, on a one-week safari tour of South Luangwa.*
- ✓ *On Zambia's famous walking safaris you'll be able to spot elephants, hippos, buffalo, giraffes, as well as a variety of birdlife, amongst many other species.*





ROUTE & ITINERARY

DAY 1: LUSAKA - SOUTH LUANGWA NATIONAL PARK

Your Zambia safari starts with an air transfer from Lusaka Airport to Mfuwe Airport. Upon arrival in the Eastern Province of Zambia, a lodge representative will meet you and take you on a 45-minute road transfer to Mfuwe Lodge in the South Luangwa National Park. After settling into your thatched chalet suite, you will have the opportunity to explore the lodge's facilities, like the swimming pool, before embarking on an evening game drive. During your excursion, spot in a remote part of the Luangwa Valley as your experienced guide offers you a sundowner as the sun sets. Mfuwe Lodge is famous for the local elephants that regularly wander through the entrance to the lodge each November. Whether you spot wildlife at the lodge, or while on a game viewing activity in search of them, spotting the free-roaming game is always a surprise. After your game drive, return to the lodge where a hearty meal will be served. Evenings in the bush are magical - home-cooked meals, candlelight and a starlit sky. The festive alfresco dining experience is the opportune time to relax in the wonder of Africa as you enjoy the culture of the friendly staff. Return to your suite for a peaceful night's rest before waking up early for the next part of your Zambia adventure.

DAY 2-3: SOUTH LUANGWA NATIONAL PARK

Awake before the sun rises and prepare for an early morning game drive. After a warm cup of coffee and a rusk, you will venture out into the wild alongside a trained guide who will show you the unfiltered wildlife of the South Luangwa Valley. Return to the lodge for a hearty breakfast before departing on a road transfer to Bilimungwe Bushcamp.

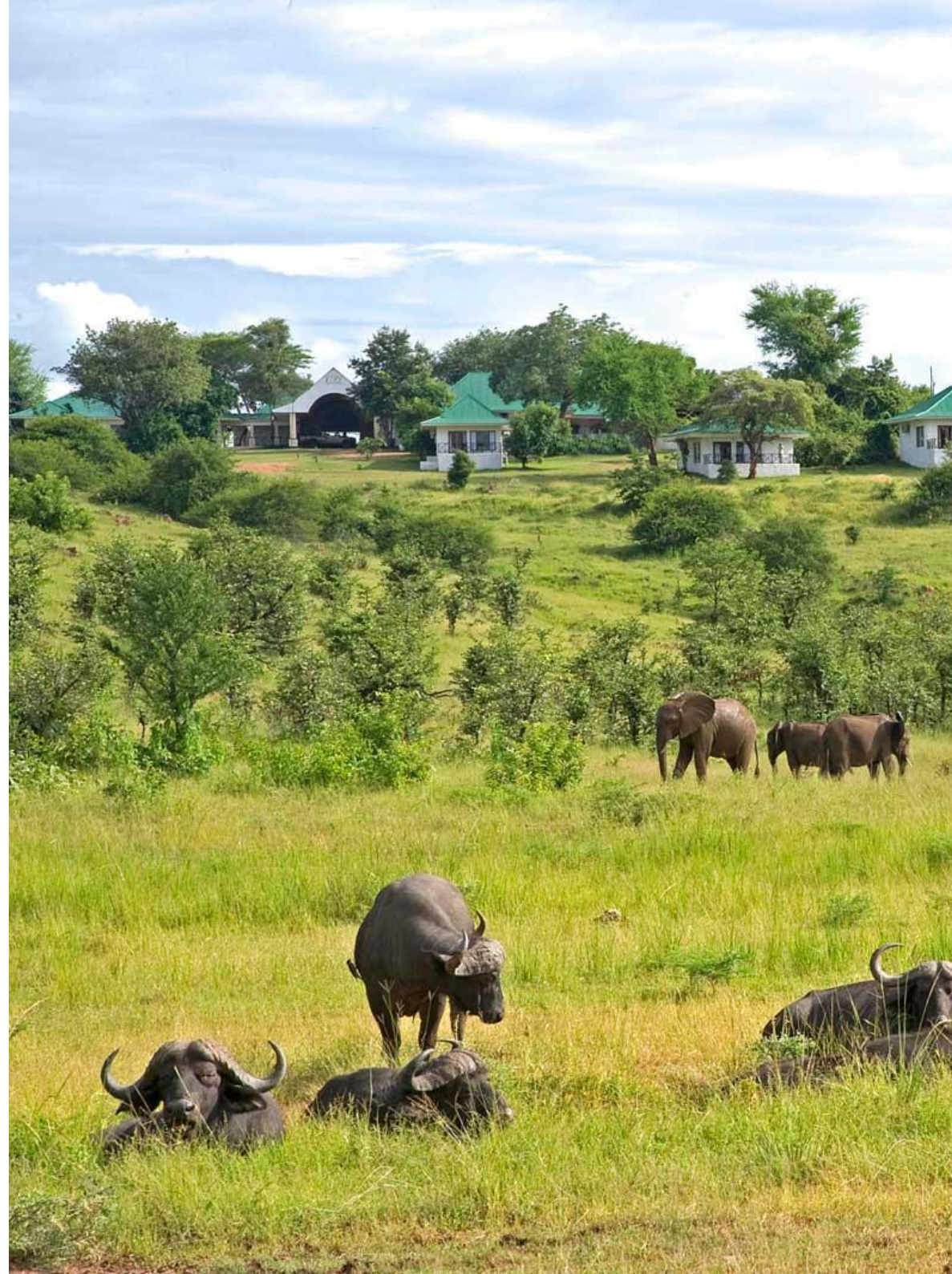
This Zambia safari lodge in the South Luangwa National Park is situated on the banks of the Luangwa River. The camp has three waterholes that attract numerous numbers and a diversity of wildlife species. Settle into your suite before enjoying a spot in front of the lagoon, under a mahogany tree, and watch as a myriad of birds decorates the sky. After enjoying lunch at the lodge, meet your expert guide for an afternoon game drive. Wildlife sightings may include elephant, zebra, antelope, hippo and many others. The appearance of these wildlife wonders occurs, of course, at the discretion of the free-roaming animals themselves. After the evening game drive, return for dinner and post-dinner drinks at the lodge before returning to your suite for an early night's rest. Awake in the early hours of the morning and embark on an early morning game viewing activity. Choose between a game drive and a walking safari, leading you to the vast plains or to an intimate discovery of the smaller facets of the bush respectively.

>After your morning activity, enjoy a freshly prepared breakfast at the lodge before repeating the routine of the day before. Each day follows the same routine but results in completely unique experiences.

DAY 4-5:SOUTH LUANGWA NATIONAL PARK

After an early morning game viewing activity and a delicious breakfast, you will depart on a road transfer to the magical Chamilandu Bushcamp, situated further along the Luangwa River. You will stay in a tree house positioned on stilts and offering a panoramic view of the plains.

This exclusive safari lodge enjoys a remote position in South Luangwa, where intensive game viewing can be enjoyed. With a nearby watering hole, wildlife can be expected to visit the campsite during various times of the day.





Before lunch, enjoy casual game viewing from the hide overlooking the waterhole. After satisfying your appetite, venture out alongside a trained guide on a game drive or walking safari in the game-rich valley.

During your afternoon game viewing activity, you will take a break to enjoy the tranquility created by the picturesque landscapes of the South Luangwa. Admire the vistas as you indulge in a sundowner, watching the sun descend into the horizon. Return to the lodge to share your experience with the friendly staff and fellow travellers around a blazing campfire with pre-dinner drinks. Dinner will be served either in the dining room or alfresco, under a canopy of stars. Return to your tree house for a supernatural sleeping experience, and wake up to an early morning game drive or walking safari before breakfast and a siesta.

DAY 6-7:SOUTH LUANGWA NATIONAL PARK

Lusaka

Enjoy a drive or walk in the park at dawn before being served a hearty breakfast and departing for Kapamba Bushcamp via a road transfer. Get acquainted with your destination for the final part of your Zambia vacation as you spend your siesta exploring the lodge's facilities and the Kapamba River.

The dining room and bar area offers views over the river, ideal for an afternoon of relaxation. Enjoy the comfort of your suit as you relax in your own private plunge pool. Be surprised as elephants casually grace the camp grounds with their presence and if you're lucky enough, you'll spot the resident leopard lurking mysteriously around the lodge. Bird watching at Kapamba is an ornithologist's dream due to the prolific

After lunch, explore the area on a game drive, but return in time for a special treat - sundowners served around a table positioned in the river. The sandy river allows safari-goers to walk into the water and enjoy the sunset surrounded by water. This magical experience is sure to remain engraved in your memory for a lifetime.

DAY 8: LUSAKA

On the final day of your Luangwa vacation, you will depart from the lodge in a road transfer to Mfuwe Airport. Here, you will board a flight to Lusaka Airport, where you will meet your onward travel arrangements.

INCLUDED

- ✓ Seat in charter flights between points as indicated
- ✓ Meals & accommodation as described in the itinerary
- ✓ Transfers
- ✓ Scheduled activities & excursions as described in the itinerary
- ✓ Government bed levies
- ✓ 15% VAT

EXCLUDED

- ✗ Any items of a personal nature i.e. telephone, laundry & curios
- ✗ Additional meals & beverages
- ✗ Gratuities & portages
- ✗ Optional extra excursions & activities
- ✗ Any items not mentioned in the itinerary
- ✗ International Flights
- ✗ Visa fees & applications
- ✗ Personal Travel & baggage Insurance
- ✗ Change of Itinerary whilst on tour



OUR TRAVELLERS SAY

“ **JC - ZA**
★★★★★

EXCELLENT AND EFFICIENT SERVICE

Falcon safaris have given me the correct advice with excellent service. The only suggestion will be to work closer with the lodges to confirm bookings as soon as possible. We have booked and pay our deposit a year in advance. We have only receive our final confirmation from Chobe Safari lodge a week before departure. I do realize its not within your control but with limited alternatives and a group of 22 people it becomes an issue to find alternative accommodation if the booking was cancelled



Google Rating

5.0 ★★★★★

[See all our reviews](#)

“ **DEBBIE - USA**
★★★★★

WONDERFUL AFTERNOON WITH BEAUTIFUL CREATURES

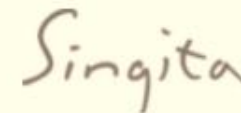
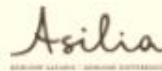
I thoroughly enjoyed my afternoon with the elephants. I rode an 2 year old female, her name is not in my head, and it was magical. She loved her treats at the end of the ride and her trainer was a lovely man. We talked the whole hour and he taught me so much about these magical creatures.

Thank You for supporting this wonderful organization with your tour company.



AFRICA IS ABOUT WHO YOU KNOW

**We have partnered with the BEST IN AFRICA
to ensure your DREAM TRIP is in safe hands.**



OUR PARTNERS AND ASSOCIATIONS





**YOUR AFRICAN PARTNER IS WAITING
TO WELCOMING YOU**



www.falconsafaris.com